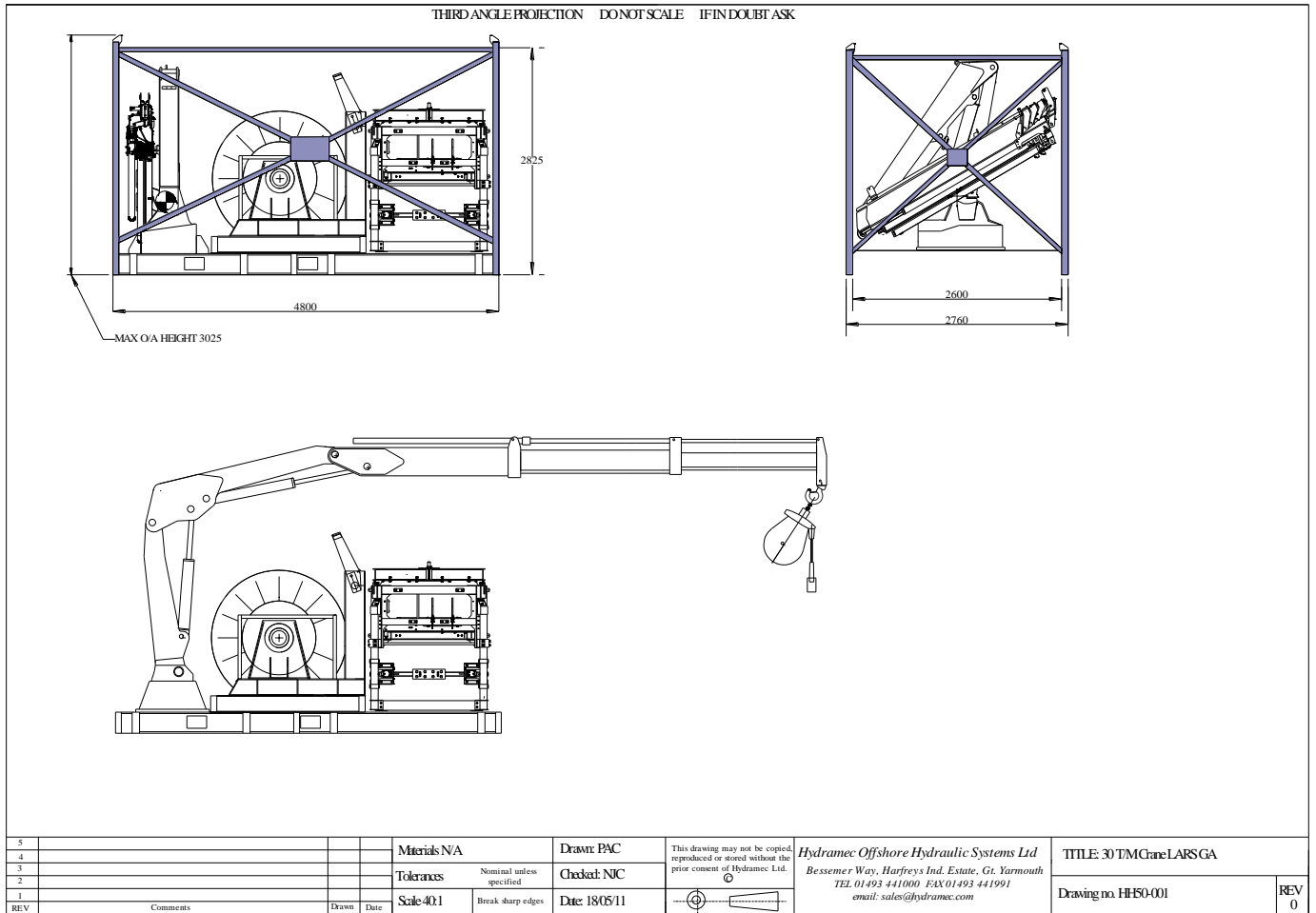


## Crane Launch and Recovery Systems (LARS)



<b>Dimensions</b>	Up to 4800mm (L) x 2760mm (W) x 3025mm (H).
<b>Safe Working Loads</b>	1800 kg to 4000 kg Plus
<b>Classification</b>	Safe Area or Zone 2 Hazardous (Atex compliant to Group 11 Category 3)
<b>Compliance</b>	CE Compliant to EU Directive 94/9/EC ATEX & 2006/42/EC MED. The Technical File is approved by Lloyds Register.
<b>Certification</b>	Approved by Lloyds Register to their 'Code for Lifting Appliances in a Marine Environment' 2003 and BS EN 12079 or DNV 2.7-1 for open sea transfer.
<b>Capacities</b>	UP to 1650m of 32mm umbilical or 2200 of 25.4 umbilical at 3.2G. Free Standing: 300m of 32mm or 25.4 umbilical at 2.5G. on fixed rigs.
<b>Power</b>	22KW up to 37KW 415/50 HZ 440/60 HZ
<b>Cranes</b>	Marine base, marinised cylinder rods and marine paint
<b>Reservoir</b>	1 x Level Gauge. 1 x Filler / Breather. 1 x Return Filter. 1 x Suction Strainer.
<b>Transportation</b>	Lift/Protection Frame and slings to BS EN 12079 and Fork Pockets as standard Shipping weights up to 16000 kg depending on quantity of umbilical and ROV
<b>Paint Specification</b>	Epoxy two parts epoxy phosphate primer. Epoxy two parts paint system (client's choice of colour).
<b>Optional Extras</b>	Lock/Latch & Sheave Wheel.                      Air Blast Cooler. Umbilical Termination & adaptors              Eexd Tank Heater Medium Tension Spooling.